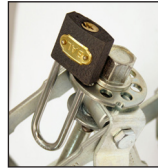


WHEEL CHOCKS

BAL offers a complete line of wheel chocks to improve front-to-back trailer stability during use. Whether you have a single or tandem axle trailer, we have the right wheel chock for your needs. By helping prevent tire shift and improving stabilization, BAL's wheel chocks make your camping X-perience a pleasurable one.

Tandem Axle Chocks



Optional Pad Lock



X-Chock Tire Locking Chock

US Pat. 8,365,875; CA Pat. 2,644,634

Model 28010 Single boxed w/ handle
Model 28012 Double boxed w/ handle

- Provides added stabilization and prevents tire shifting
- Stabilize using the tires' natural movement
- Rust inhibitive zinc coating
- Lightweight and easy to store
- Easy setup with included ratchet wrench
- Lockable for added security with optional **28015** Pad Lock
- Fits the tire spacing from 1 3/8" to 10"
- Made in the USA



X-Chock Video

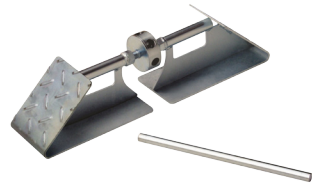


X-Tended Fit X-Chock

US Pat. 8,365,875; CA Pat. 2,644,634

Model 28014 Single boxed w/ handle
Model 28024 Double boxed w/ handle

- Same great features as the standard X-Chock
- Fits tire spacing from 10" to 17" (wide track axle spacing)
- Fits on Bullet, LaCrosse, PrimeTime, Passport, NorthTrail, WhiteHawk, etc.



US Pat. 6,425,465

Standard Tire Locking Chock

Model 28000A Single boxed

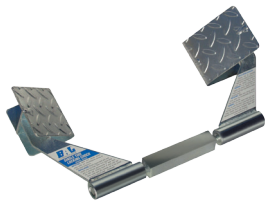
- Placed on ground and applies force between both tires
- Aids in trailer stability and prevents tire shifting
- Lightweight and easy to store
- Rust inhibitive zinc coating
- Extends from 15 1/4" to 23 1/8"



APPLICATION



Single Axle Chocks



APPLICATION



US Pat. 6,425,465

Single Tire Locking Chock

Model 28020 Single boxed

- Helps prevent single axle trailers from rolling & improves stability
- Sets around tire & adjusts by turning center square bar
- Lightweight and easy to store
- Rust inhibitive zinc coating



APPLICATION



Light Trailer Tire Leveler

Model 28050 Single boxed w/ handle

- Designed to help level & stabilize lightweight, single axle trailers
- Eliminates the need for pulling on to blocks in most cases
- Easy to operate (elevating & lowering) using included ratchet wrench
- Heavy duty tubular steel construction
- Rust inhibitive power coat finish
- Distance between plates: Top - 20 1/2"; Bottom - 12"

