

⚠ THESE INSTRUCTIONS APPLY TO 2016, 2017 AND 2018 MODELS FOR REPAIR ONLY SPECIFIC TO THE STYLE OF WEAR BAR PICTURED BELOW, NOT AS PREVENTATIVE MAINTENANCE. FOR PRODUCT BUILT IN OTHER YEARS OR WITH DIFFERENT STYLE WEAR BARS, CONTACT THE RV OEM FOR ASSISTANCE.

LUBRICANTS

Some customers and service facilities ask about adding lubricant to the wear bar. ZEP 45 is a food grade lubricant that will not allow debris to adhere to it. Other lubricants will cause debris to attach to it, thus causing more friction. If other types of lubricants have been used, we recommend removing the lubrication.

ROLLER INSTALLATION

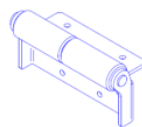
1. Measure the height of the wear bar, to determine which rollers you need.
The wear bar will be 1/2" or 3/4" tall. Do not use 3/4" rollers with 1/2" thick wear bar. The rollers are not intended to support the weight of room, but to assist the wear bar. Do not remove the wear bar, even if it is collapsed.
2. Add rollers underneath the slide box to reduce the friction between the box and wear bar.
 - a. Use a pry bar or jack above the wear bar to create enough space to install roller assemblies.
 - b. Notch out only the wiper seal on the bottom rough opening edge where the rollers will be installed. **DO NOT CUT INTO THE PLASTIC EXTRUSION OR THE WEAR BAR. THIS WILL CREATE SEAL VOIDS.**
 - c. With the slide room halfway out, along the bottom outside face of the rough opening:
 - i. Ends Install (2) Roller 1" from the edge of the slide room floor, one at each side.
 - ii. Center Install (1) Roller in the centered between the end rollers.
 - iii. Room Length Utilize the Roller Chart to determine the use of additional rollers for varying slide-out lengths, installed between the end and center roller assemblies.
3. Using 5 #10 screws for each roller assembly, secure the roller bracket to the bottom of the rough opening.

ROOM LENGTH	QTY OF ROLLERS
UP TO 93 3/8"	3
93 3/8" TO 119 15/16"	4
120" TO 146 5/8"	5
146 11/16" TO 173 5/16"	6
173 3/8" TO 199 15/16"	7
200" TO 226 5/8"	8
226 11/16" TO 253 5/16"	9
253 3/8" TO 279 15/16"	10

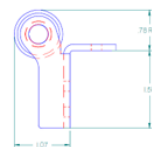
Norco Parts Required

	Used with 3/4" Wear Bar	Used with 1/2" Wear Bar
Norco Part Number:	854303	854304
Description:	Roller, base 3/4 inch wear bar	Roller, base 1/2 inch wear bar

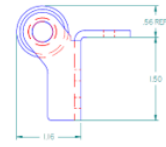
Roller Assembly



854303 used with 3/4" Wear Bar

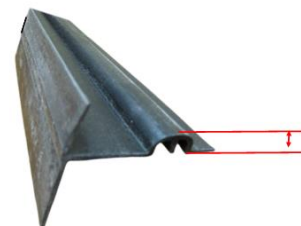


854304 used with 1/2" Wear Bar



⚠ Do not use these instructions for Flush Floor Applications.

THE HEIGHT OF THE WEAR BAR WILL BE 1/2" OR 3/4" TALL IN THE AREA INDICATED BELOW. A SECTION OF THE WEAR BAR WILL BE VISIBLE WITH THE ROOM RETRACTED UP TO A FOOT FROM THE INTERIOR, BEHIND SIDE DECORATIVE TRIM/FASCIA.



INSTRUCTIONS APPLICABLE TO THIS WEAR BAR ONLY