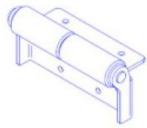


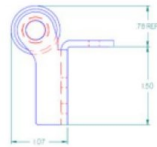
Norco Parts Required

	Used with 3/4" Wear Bar	Used with 1/2" Wear Bar
Norco Part Number:	854303	854304
Description:	Roller, base 3/4 inch wear bar	Roller, base 1/2 inch wear bar

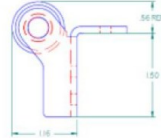
Roller Assembly



854303 used with 3/4 Wear Bar

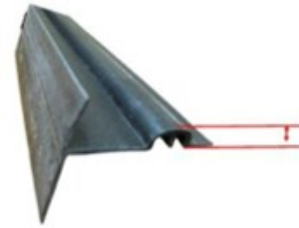


854304 used with 1/2 Wear Bar



⚠ Do not use these instructions for Flush Floor Applications.

INSTRUCTIONS APPLICABLE TO THIS WEAR BAR ONLY



Measure the height of the wear bar, to determine which rollers you need.

The wear bar will be 1/2" or 3/4" tall. Do not use 3/4" rollers with 1/2" thick wear bar. The rollers are not intended to support the weight of room, but to assist the wear bar. Do not remove the wear bar, even if it is collapsed.

VIDEO ON MEASURING: <https://youtu.be/EcCHtQBF1-o>

Fig 1. ROOM LENGTH	QTY OF ROLLERS
UP TO 93 3/8"	3
93 3/8" TO 119 15/16"	4
120" TO 146 5/8"	5
146 11/16" TO 173 5/16"	6
173 3/8" TO 199 15/16"	7
200" TO 226 5/8"	8
226 11/16" TO 253 5/16"	9
253 3/8" TO 279 15/16"	10

Fig 1. Utilize the Roller Chart to determine the use of additional rollers for varying slide-out lengths, installed between the end and center roller assemblies.

With the slide room halfway out, along the bottom outside face of the rough opening:

⇒ **Ends:** Place (2) Roller 1" from the edge of the slide room floor, one at each side.

⇒ **Center:** Place (1) Roller in the centered between the end rollers.

⇒ Place all other rollers evenly spaced between existing rollers (when applicable).

Fig 2.



Fig 2. Push the flap of the bottom wipe seal in and hold the roller up to the location you plan to install it and mark each side with a pen or pencil.

Fig 3.



Fig 3. Notch out only the wiper seal on the bottom rough opening edge where the rollers will be installed. DO NOT CUT INTO THE PLASTIC EXTRUSION OR THE WEAR BAR. THIS WILL CREATE SEAL VOIDS.

Fig 4.



Fig 4. Using 5 #10 screws for each roller assembly, secure the roller bracket to the bottom of the rough opening.

NOTE: Each RV Manufacturers floor construction is unique. It may be aluminum tube or wood studs. We recommend at least a 2" long screw to fasten the rollers.



THESE INSTRUCTIONS APPLY TO 2016, 2017 AND 2018 MODELS FOR REPAIR ONLY SPECIFIC TO THE STYLE OF WEAR BAR PICTURED BELOW, NOT AS PREVENTATIVE MAINTENANCE. FOR PRODUCT BUILT IN OTHER YEARS OR WITH DIFFERENT STYLE WEAR BARS, CONTACT THE RV OEM FOR ASSISTANCE.