

BOLT ON HITCH INSTALLATION



CREATED DATE: 02/12/2025

ID NUMBER: SII.NXG.HITCH

Customer: Jayco, Inc.

Id: 20400406 & 20400407

Tools & Hardware

Tools

9/16" Open End Wrench

9/16" Socket and Ratchet

Torque Wrench

A floor jack may be required to lift the hitch into position.

Hardware

Quantity

Size

Type

4

3/8"-16 x 1.25"

Grade 5 Hex Bolt

8

3/8"

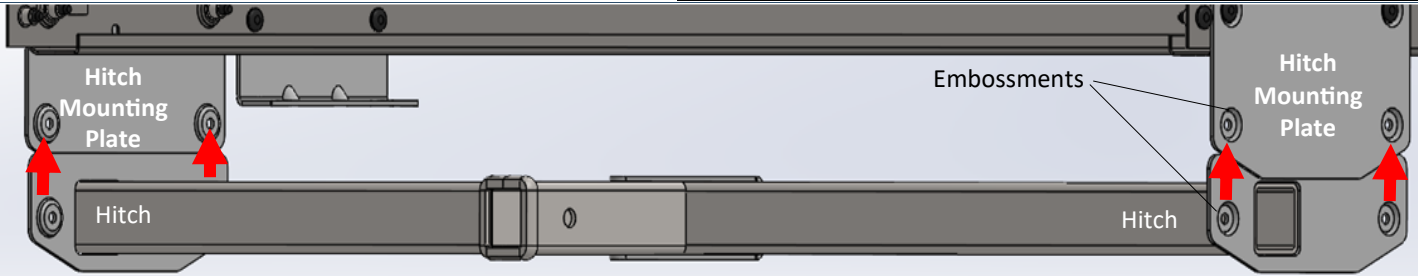
SAE Flat Washer

4

3/8"-16

Grade 5 Nylon Lock Nut

Positioning The Hitch

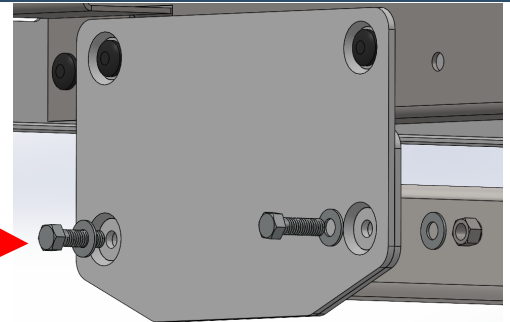


1. Raise the hitch evenly into position between the two [2] existing Mounting Plates.
2. Align all four [4] embossments, locking both sides of the hitch into the existing Mounting Plates.

Outer Hardware

3. From the outside, insert the Hex Bolts and Flat Washer through the hitch mounting plate and hitch plate.

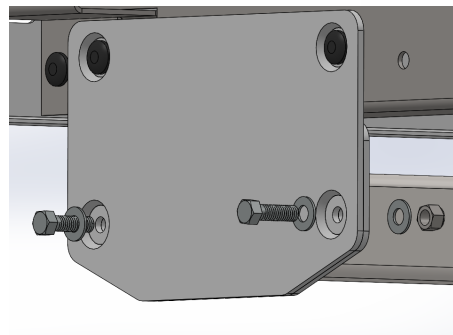
Hex Bolt + Flat Washer



Inner Hardware

4. Add the Flat Washer and Lock Nut on the inside of the plate and hitch.
5. Repeat this process on the opposite side.

Flat Washer + Lock Nut



Tighten & Torque Hardware

6. Tighten all hardware. Torque the lock nuts to 26 lbs.-ft.

